

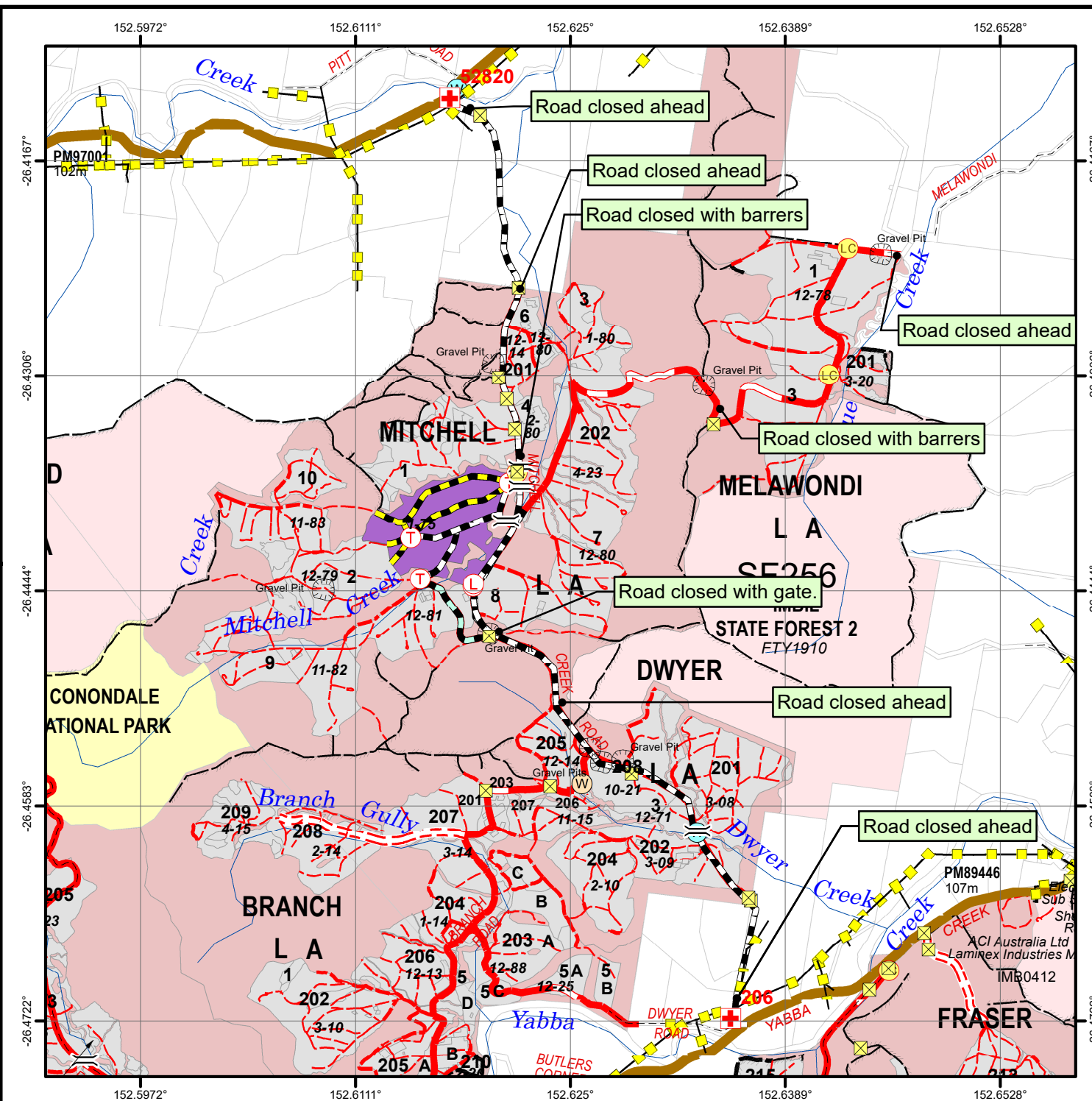
## Map 1: Location and Emergency

Harvest CF Mitchell 1 Part 1 (South)

Worktype: Harvest\_Clearfall

Task: HA0001292 Task Area: 48.46 HA

- |                            |                                  |
|----------------------------|----------------------------------|
| Ambulance Evacuation Point | Gravel Pit                       |
| Rivers and Creeks          | Permanent Waterpoint             |
| Load Check Point           | Non Permanent Waterpoint         |
| Log Landing                | Gate / Grid / Yard               |
| Truck Turn Around          | Energex Power Line               |
| Haul Route                 | School Bus Route                 |
| All Weather                | Main or Major Road (SDRN mapped) |
| Dry Weather Only           | Minor Road (SDRN mapped)         |
| Forwarder Track            | HQP Plantation                   |
| OPEN                       | HQP Custodial Lands              |



**DIAL 000 OR 112 IN THE EVENT OF AN EMERGENCY**

**OPERATIONS AREA COORDINATES**

Latitude: -26.4402 / Longitude: 152.6169  
W3W: forefinger.relieves.prodigal

**AMBULANCE EVACUATION MEETING POINT 1: 206**

Latitude: -26.472 / Longitude: 152.6353  
W3W: snap.jaded.tidy  
Location: Intersection Mitchell Creek Rd & Yabba Creek Rd, Imbil

**AMBULANCE EVACUATION MEETING POINT 2: 52820**

Latitude: -26.4126 / Longitude: 152.6172  
W3W: march.adored.muddle  
Location: Intersection Kandanga Creek Rd & Mitchell Creek Rd, Kandanga Creek

**COMMUNICATIONS**

UHF: 09    VHF: 218  
Phone: Imbil 5484 4200  
Mobile Reception: Unknown

When printed at A4: Scale: 1:40,000    1 cm = 400 metres

Prepared by HQPlantations Pty Ltd. solely for internal use. HQPlantations Pty Ltd does not accept any responsibility for any loss or damage resulting from reliance on the map. No part of this map may be reproduced or copied in any form without prior written permission from HQPlantations Pty Ltd. All rights reserved. ©

User: willial Date: 12/03/2025