

Road Trains

Tuan-Toolara Plantations

Driver Awareness



FEWER LOG HAULAGE TRUCKS ON PUBLIC ROADS AS HQPLANTATIONS' INTRODUCES ROAD TRAINS IN TUAN-TOOLARA

Road conditions in this plantation forest are changing. Longer and heavier vehicles (road trains) will be used for log transport.

All road users within the Tuan-Toolara plantation forest are reminded to take extra care and share the road safely.

The benefits of using road trains include:

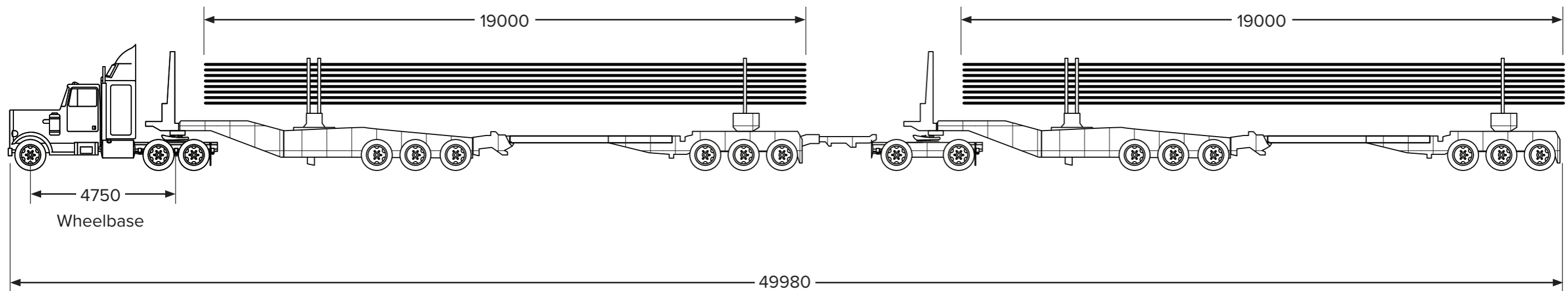
- fewer haulage vehicles on public roads
- reduced fuel use and emissions per tonne
- overall improved environmental performance
- higher log volume per trip to Hyne Timber Mill.



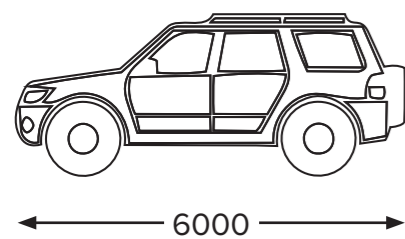
WHAT IS A ROAD TRAIN?

- A road train is a heavy vehicle combination (other than a B-double) with a prime mover towing two or more trailers.
- The type of road train that will be used in our Tuan and Toolara plantation forest is shown below.

ROAD TRAIN (DOUBLE)



4WD VEHICLE

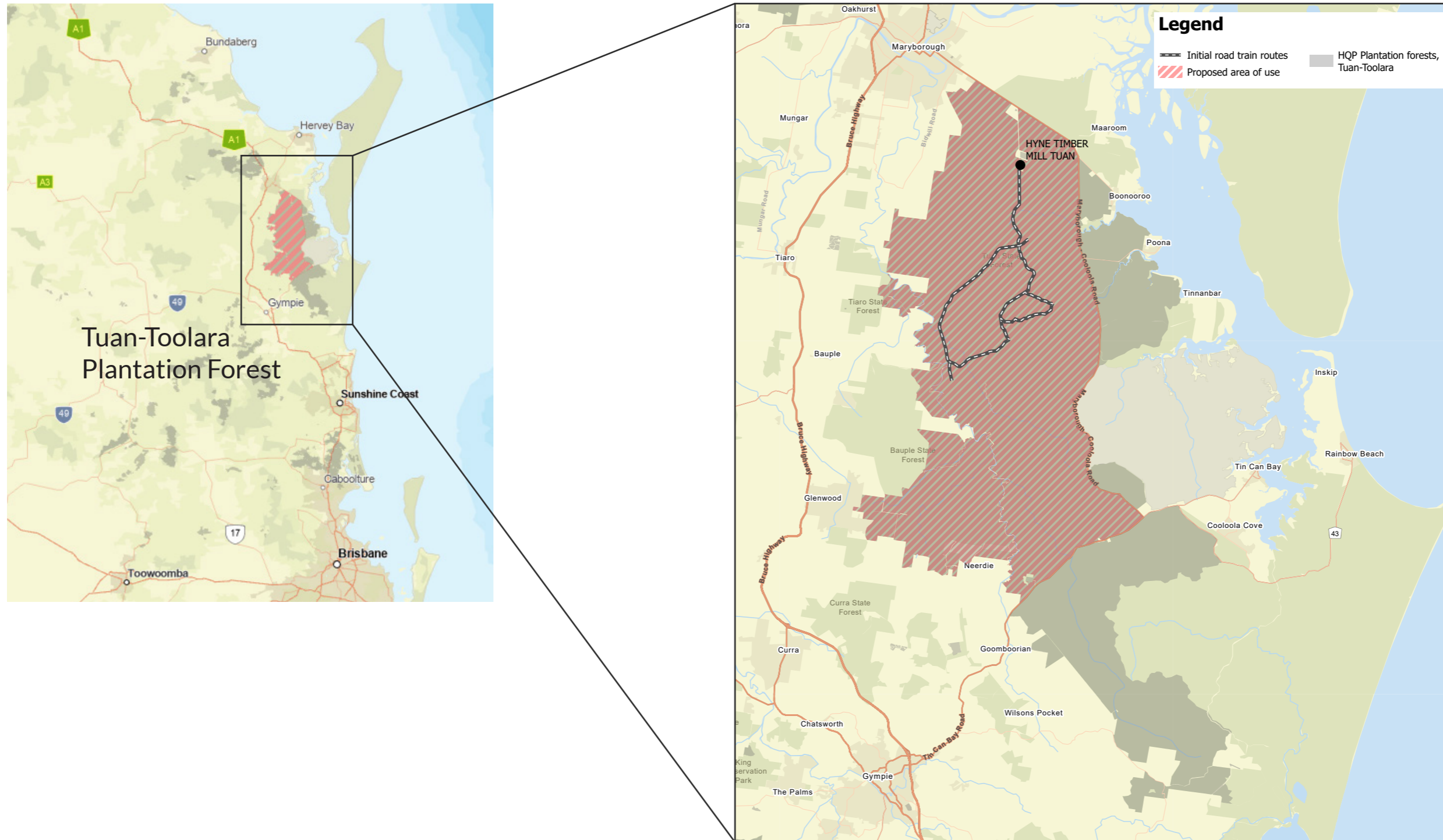


KEY PLANNING CONSIDERATIONS

- Completed road and access assessments.
- Planned staged implementation.
- Updated driver communication protocols.
- Increased advisory signage.



MAP OF ROAD TRAIN USE AREA



WHEN DRIVING ON ROADS WITH ROAD TRAINS, CONSIDER CHANGING YOUR DRIVING TO:

- Allow for longer stopping distances between your vehicle and a road train.
- Anticipate that the road train may move or sway slightly across the road due to its length.
- Give plenty of room at intersections.
- Expect to move to the left and maybe even pull over when an oncoming road train approaches especially on narrow roads.
- Note, road trains cannot move off a formed roadway due to their weight.



ALL ROAD USERS REMAIN RESPONSIBLE FOR COMPLYING WITH ROAD RULES AND DRIVING TO PREVAILING CONDITIONS

- Adjust your speed and drive to the road surface and visibility conditions.
- Obey all Signage including [worksite closures](#).
- Keep left where safe.
- Use headlights in low visibility (dust, poor light).
- Pull over safely if visibility becomes too low.
- Stay alert for **changing road conditions**.
- Click [here](#) for notifications on **plantation closures**.

For more information, visit: [Driving conditions](#) | [Transport](#) | [Queensland Government](#).



DANGER

AUTHORISED PERSONNEL ONLY
INDUCTION REQUIRED TO ENTER



**THIS PROTECTIVE EQUIPMENT
MUST BE WORN IN THIS AREA**

Company name
Site supervisor:
Phone:

**TO PROCEED YOU MUST
CONTACT CREW ON UHF CH 11**

This Regulatory Notice is made by HQPlantations Pty Ltd ACN 142 448 977 as a delegate of the Chief Executive under the Forestry Act 1959. Contravention of a requirement of this notice is an offence against the Forestry Act 1959. Penalties apply.


HQPlantations

COMMUNICATING WITH OTHER ROAD USERS

Call-Up Procedure

If your vehicle has UHF communications, please:

- use Channel 40 to announce your location and direction of travel at key call points like road kilometre markers, named road intersections and blind corners
- listen for communication from other road users.

Remember not all vehicles are equipped with radio so, when driving on plantation forest roads, always expect another vehicle to come around the corner.



FURTHER ENQUIRIES

If you have any further enquiries, please contact us at our Toolara Office.

Phone: 07 5488 2112

Email: information@hqplantations.com.au

Website: [Contact us | HQPlantations](#)

